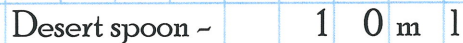
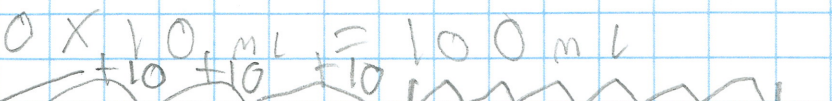


1	6	.	0	6	.	1	5
---	---	---	---	---	---	---	---

1.



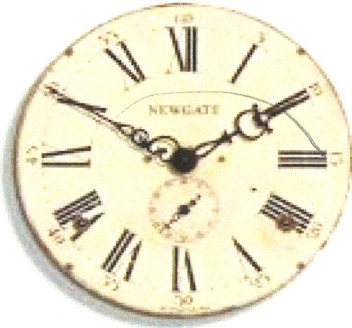
$10 \times 10 \text{ mL} = 100 \text{ mL}$

 $10 \times 10 \text{ mL} = 100 \text{ mL}$
 $100 + 40 = 140 \text{ mL}$

Becca

1 6 . 0 6 . 1 5

To solve problems using skills we have learnt (Context: Florence Nightingale)

3.



Flu medicine needs

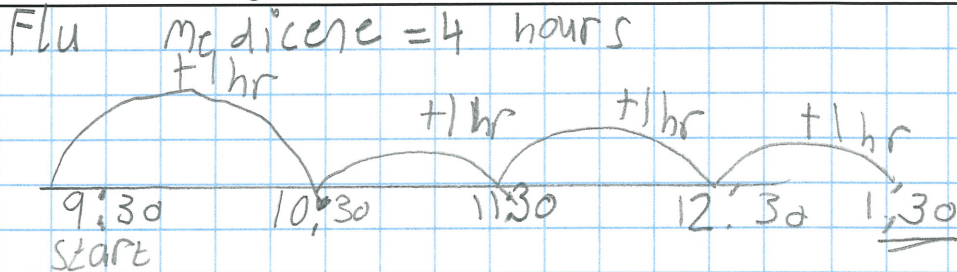
to be given every 4 hours

Medicine for the

runs needs to be given

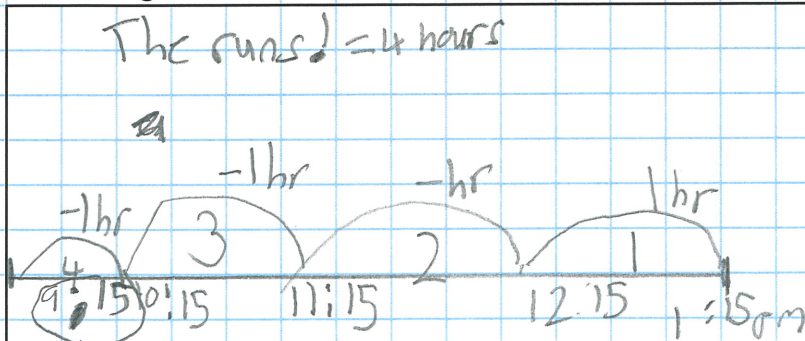
every 4 hours

The flu medicine was given at 9:30am, when is the next dose due to be given?



Answer: 1:30 pm for the next bit of medicine.

Florence has just given medicine for the runs, its 1:15pm. When was the last dose given?



The last dose was given at 9:15 am

taylor

1 6 . 0 6 . 1 5

To solve problems using skills we have learnt (Context: Florence Nightingale)

2.



Each ward has 8 beds

There are 15 wards

How many beds are there in the hospital altogether?

I don't know my 15 table but I know my 5's and 6's.

$$\begin{array}{r} 15 \text{ wards} \times 8 \text{ beds} \\ 11 \\ \hline 105 \end{array}$$

$$\begin{array}{l} 10 \text{ wards} \times 8 \text{ beds} = 80 \text{ beds} \\ 5 \text{ wards} \times 8 \text{ beds} = 40 \text{ beds} \\ \hline 80 + 40 \\ \hline 120 = 120 \text{ beds} \end{array}$$

Each bed needs two pillows and 4 sheets, how many pillows and sheets are needed for all of the beds.

Pillows

$$120 \times 2 \text{ or } 120 + 120 = 240 \text{ pillows}$$

$$200 + 40 = 240$$

Sheets $120 \times 4 \text{ or}$

$$120 + 120 + 120 + 120 = 480 \text{ Sheets}$$

$$400 + 80 = 480$$

Harry

	80	beds in total	My running total
10am	37	beds are filled	
11am	7	people sent home	-7 50
11am	9	new people brought in	+9 59
12pm	6	new people brought in	+6 65
1pm	5	people die	-5 60
2pm	8	people sent home	-8 52
3pm	6	new people brought in	+6 58
4pm	6	people sent home	-6 52

52 beds are filled

Find dissem. $(+10)$ $(+8)$

52 62 72 80

= 28 beds
50 are